



**CARLISLE**  
FLUID TECHNOLOGIES

SOLUTIONS FOR YOUR WORLD



**DEVILBISS.** Ransburg. **ms** **BGK** **BINKS.**

# Binks F200 & F400

- Advanced, Light-Weight, Pistol Grip Flow Guns

# F200 & F400

- Flow Guns for the extrusion of sealants, mastics, putties and adhesives



## F200

276 bar / 4000 psi

Anodised Aluminium

*Ultra light-weight* – only 430g  
(0.95lbs)



## F400

214 bar / 6000 psi

Stainless Steel

610g (1.34lbs)

Light Trigger Pull

# Benefits



Adaptable **Fluid Nozzle Connections** allow for the use of most common nozzles and existing tooling

Recessed non-clogging trigger pins activate internal flow mechanism

Easy to operate trigger lock with 'no-finger-trap' guard

Easy to control 'lite-squeeze' trigger

Enclosed Mechanism guards against contamination

Easy access to internal mechanism for fast cleaning and maintenance

F200 light-weight – only 430g (0.95lbs). Durable forged aluminium handle

Adjustable trigger pull distance



# Competitor Comparison - Trigger Lock

Binks F200/F400 has a lightweight quick action trigger lock with integrated gun rest.



Competitor I – The gun has no trigger lock but does have a gun rest.



Competitor G has a quick action trigger lock but it is easily broken in the field and often removed. No gun rest.



# Competitor Comparison - Swivel

The F200/F400 has a lightweight inline swivel action with 1/4" universal thread or NPT (Z-Swivel or no swivel also available). Zero leaks when tested with oil across pressure range.



## Assembly

Competitor I has in-line swivel but found to leak at low pressure with oil.

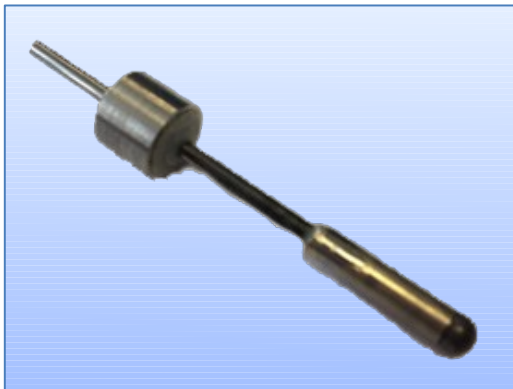


Competitor G has an in-line swivel but it leaked across pressure range when tested with oil. Tightening it up to reduce leak made it too stiff to swivel effectively.



# Competitor Comparison -

The F200/F400 flow gun uses the same UHMWPE seal, which is used in the proven and successful AA4400 gun. The seal is squashed around a  $\varnothing 2$ mm carbide needle with a carbide ball and seat. This means it is extremely hard and resistant to wear. The seal is easy to remove and clean and requires very little maintenance.



## Seals

Competitor I's flow gun uses a PTFE U-Cup seal with fluoroelastomer energiser. The seal adjusts for wear with a series of disc springs and a chevron brass washer arrangement. This makes it very expensive and not very easy to clean. The needle is steel with a carbide ball and seat.



Competitor G's flow gun uses a U-Cup seal with fluoroelastomer energiser. The seal / needle assembly is difficult to remove and is easily contaminated. The needle is steel with a carbide tapered end. Its surface finish is poor. Unlike Binks or Competitor I, the needle has to be removed from the front, meaning the nozzle has to be removed first.





# Competitor Comparison – Safe Design

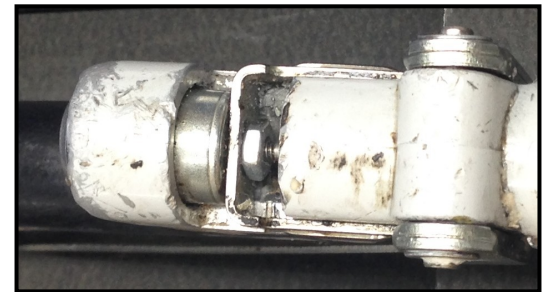
F200/F400 – Finger traps removed and all moving parts are completely enclosed.



Competitor I – Large gap behind trigger could trap fingers.



Competitor G – Moving parts are not enclosed meaning they are vulnerable to contamination and could become trapping points.





# Nozzle Adaptors

- Choose to use the Binks G3/8" BSPB nozzle size or select the size used by Competitor I or G to reuse existing tools.

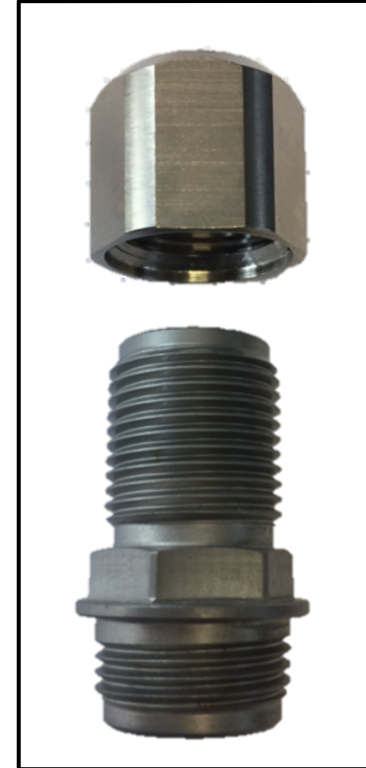
Binks – 3/8" BSPB



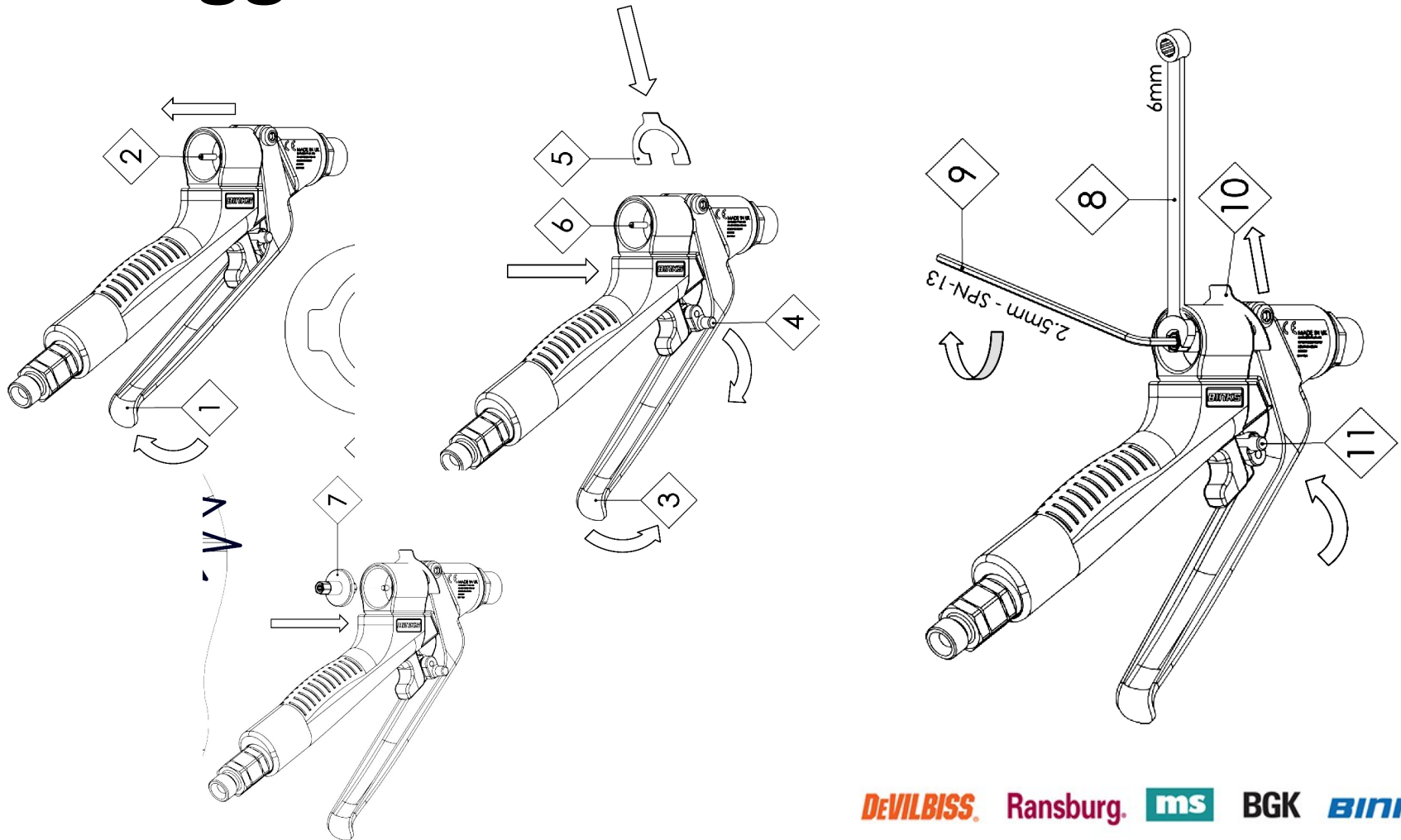
Comp. G – 3/4" UNF



Comp. I – M18 x 1.5



# Trigger Travel Adjustment



# Accessories



Existing palm grip flow gun nozzle will fit on to Binks nozzle adaptor.

Supplied as standard when ordering the Binks Nozzle connection.



1/8" NPT adaptor (FG300011) for custom made nozzles will fit on to Binks nozzle adaptor.



Z-Swivel 1/4" BSPP or NPSM  
550 bar / 8000psi

# Specifications

SPECIFICATIONS			
FLUID INLET PRESSURE			
Max Fluid Input Pressure	F200	276 bar [4000 psi]	
	F400	414 bar [6000 psi]	
ENVIRONMENTAL			
Ambient Operating Temperature	0-40°C Nominal [0-104°F]		
MATERIALS OF CONSTRUCTION			
Gun Body and Fluid Passageways	F200	Anodised Aluminium	
	F400	17-4 Stainless Steel	
Gun Handle	Anodised Aluminium		
Fluid Needle and Seat Construction	Tungsten Carbide		
Seals	Polyethylene		
	Fluoroelastomer [FKM]		
CONNECTIONS			
A	Fluid Inlet Options	STRAIGHT ADAPTOR G1/4" BSPP / NPSM Universal Thread Male	
		STRAIGHT ADAPTOR 1/4" NPT Thread Male Or Female	
		STRAIGHT SWIVEL WITH G1/4" BSPP / NPSM Universal Or 1/4" NPT Thread Male	
		Z-SWIVEL G1/4" BSPP or 1/4" NPSM	
B	Fluid Nozzle Adaptor Options	G3/8" BSPP	Male
		3/4" UNF	Male / 1/4" NPT Female
		M18 x 1.5	Male
WEIGHT			
With Nozzle	F200	430g [0.95lbs]	
	F400	610g [1.34lbs]	

