

# Panther 100H

## 100 Series Teflon Coated HVLP General Purpose

The Panther 100H is a high quality general purpose pressure feed sprayer. Designed with an all stainless steel fluid passage, this spray gun can be set up with low volume air caps for small HP compressor use which makes it perfect for on site jobs.

### Panther 100H

#### Features

- ➔ Forged Aluminum Body
- ➔ Stainless Steel Fluid Passages
- ➔ Great for Onsite or Production applications
- ➔ Teflon Hard Coat Gun Body
- ➔ Teflon Hard Coat Air Caps Available



1 Quart Pressure Cup (Aluminum)  
**OP100H-303R2**



1 Quart Pressure Cup (PPS)  
**OP100H-PPSR2**

## Panther 100H

*"HVLP Versatility"*

#### Available Outfits

##### 2 Quart Outfits

(Includes 5' Hose Assemblies)



2 Quart (Economy)

**OP100H-130**



2 Quart (Bandit)

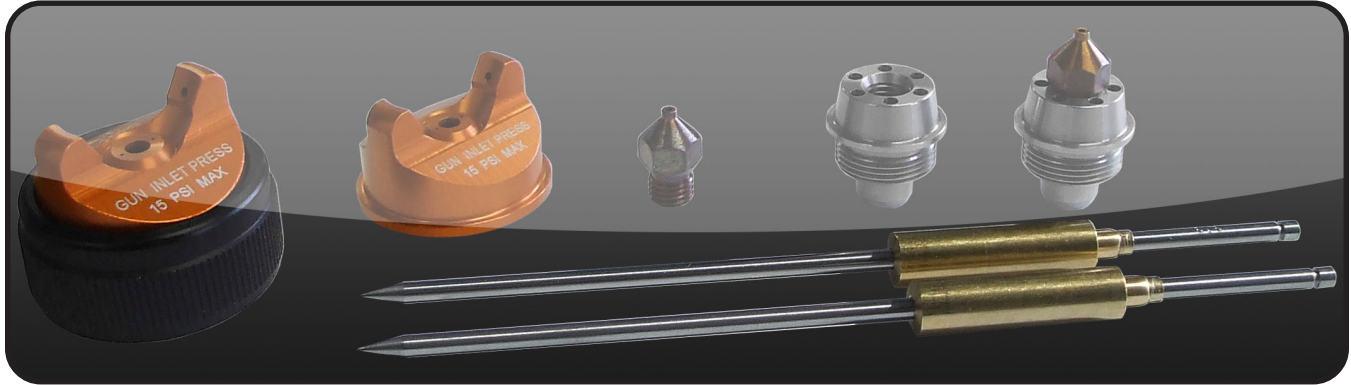
**OP100H-600**

##### Tank Outfits

Tank Outfits Include 25' Hose Assemblies and are available in 2.5 gal, 5 gal, 10 gal, 12.5 gal and 15 gal sizes.

(Includes 25' Hose Assemblies)





## Nozzle Chart for Panther100H

Material Type	Fluid Orifice x Air Cap	Maximum Pattern Width	Pressure / Siphon
<b>Very Thin</b> less than 16 sec. Zahn #2 inks, dyes, solvents, stains	0.5, 0.8 mm x 1090	10	P
	0.5, 0.8 mm x 1092	11	P
<b>Thin</b> 16 to 20 sec. Zahn #2 lacqers, enamels, primers, sealers	1.0, 1.2 mm x 1092	11	P
	1.0, 1.2 mm x 1093	12	P
<b>Medium</b> 21 to 30 sec. Zahn #2 automotive base coat enamels, primers, epoxies, urethanes, automotive clear coat	1.3, 1.4, 1.5 mm x 1093	12	P
	1.3, 1.4, 1.5 mm x 1095	12	P
	1.3, 1.4, 1.5 mm x 1097	13	P
<b>Heavy</b> over 30 sec. Zahn #2 heavy body primers, high solid enamels, high solid automotive coatings, adhesives	1.6, 1.7 mm x 1095	12	P
	1.6, 1.7 mm x 1097	13	P
	1.6, 1.7 mm x 1195	13	P
	1.6, 1.7 mm x 1197	14	P

## Air Caps for Panther100H

Air Caps	Retaining Rings	Max Inlet Pressure	CFM @ Max Inlet Pressure
21-1090	21-1001	15 PSI	6 CFM @ 15 PSI
21-1091		15 PSI	8 CFM @ 15 PSI
21-1092		15 PSI	8 CFM @ 15 PSI
21-1093		18 PSI	10 CFM @ 18 PSI
21-1094		33 PSI	13 CFM @ 33 PSI
21-1095T		50 PSI	20 CFM @ 50 PSI
21-1097		50 PSI	20 CFM @ 50 PSI
21-1195	Included	50 PSI	20 CFM @ 50 PSI
21-1197		50 PSI	20 CFM @ 50 PSI