

# Lynx 300H

## 300 Series HVLP Fine Finish

The Lynx 300H is a fine finish series HVLP air spray gun, designed for production use and achieving the ultimate in fine atomization. Complies with all environmental regulations for HVLP.

### Lynx 300H Features

- ➔ 45 PSI Inlet Pressure
- ➔ Patented 2 Piece Nozzle Design
- ➔ HVLP - 65% Transfer Efficient or Better
- ➔ All Stainless Steel Fluid Passages



1 Quart  
Pressure Cup  
(Aluminum)  
**OL300H-303R2**



1 Quart  
Pressure Cup  
(PPS)  
**OL300H-PPSR2**

**Lynx 300H**  
"It's HVLP at its Finest"

### Available Outfits

#### 2 Quart Outfits

(Includes 5' Hose Assemblies)



2 Quart  
(Economy)

**OL300H-130**



2 Quart  
(Bandit)

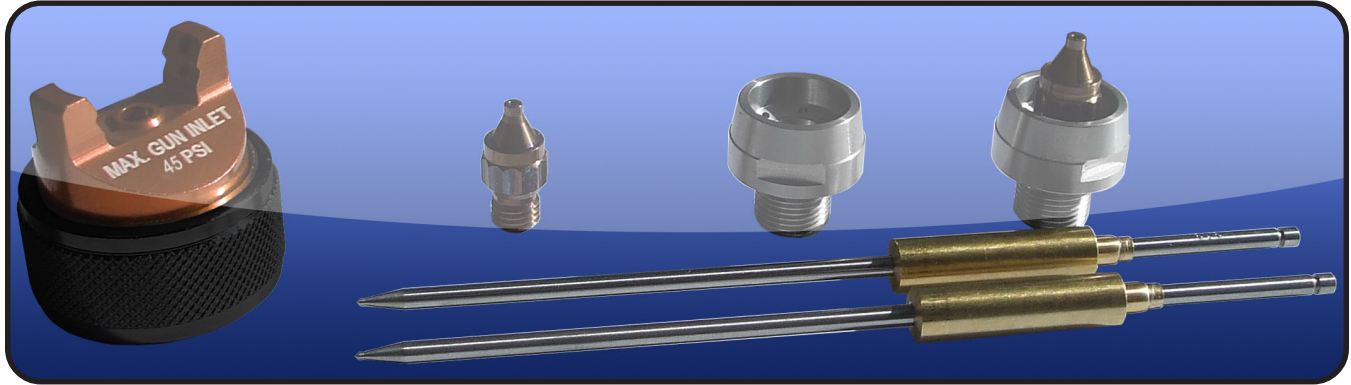
**OL300H-600**

#### Tank Outfits

Tank Outfits Include 25' Hose Assemblies and are available in 2.5 gal, 5 gal, 10 gal, 12.5 gal and 15 gal sizes.

(Includes 25' Hose Assemblies)



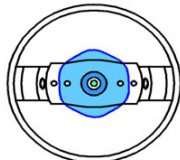
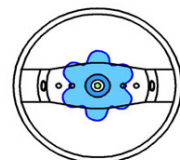






## Lynx 300H Nozzle Chart

Material	Orifice Size	L300H HVLP
Stains, Dyes	0.8	45 PSI @ 13.5 CFM
Single Stage	1.3 - 1.4	45 PSI @ 13.5 CFM
Base Coat	1.3 - 1.4	45 PSI @ 13.5 CFM
Clear Coat	1.3 - 1.4	45 PSI @ 13.5 CFM
High Solid Clears	1.4 - 1.5	45 PSI @ 13.5 CFM
Sealer	1.4 - 1.7	45 PSI @ 13.5 CFM
Primer, Wash Primer, Epoxy	1.4 - 1.7	45 PSI @ 13.5 CFM

**Q: What makes our atomization superior?**

**A: Our 12 Point Balanced Plenum**

Lynx 300H	Competition
 <p>12 point diffusion makes a more even cone of air as the fluid is atomized</p>	 <p>Without 12 point diffusion, high and low spikes exist as the air atomizes the fluid</p>
 <p>The result is more uniform particles</p>	 <p>The result is very small and large particles</p>
 <p>A flatter more uniform finish is achieved</p>	 <p>This will have a more orange peel finish</p>

## Nozzle Kits for Lynx 300H

HVLP Kit	Orifice Size	Air Cap (Included)	Orifice (Tip) (Included)	Needle (Included)
JK1008	0.8 mm	23-1008	33-0208 0.8mm (.022")	40-1308 (308)
JK1010	1.0 mm	23-1010	33-0210 1.0mm (.040")	40-1310 (310)
JK1012	1.2 mm	23-1012	33-0212 1.2mm (.046")	40-1312 (312)
JK1013	1.3 mm	23-1013	33-0213 1.3mm (.052")	40-1313 (313)
JK1014	1.4 mm	23-1014	33-0214 1.4mm (.055")	40-1314 (314)
JK1015	1.5 mm	23-1015	33-0215 1.5mm (.059")	40-1315 (315)
JK1017	1.7 mm	23-1017	33-0217 1.7mm (.070")	40-1317 (317)
JK1019	1.9 mm	23-1019	33-0219 1.9mm (.075")	40-1319 (319)
JK1022	2.2 mm	23-1022	33-0222 2.2mm (.086")	40-1322 (322)