

# Lynx 300C

## 300 Series Conventional Fine Finish

The Lynx 300C is a high quality fine finish spray gun designed for achieving the ultimate in fine finish atomization. The 12 point plenum design provides for a more even and smooth finish.

### Lynx 300C Features

- ➔ Forged Aluminum Body
- ➔ Stainless Steel Fluid Passages
- ➔ Patented 2 Piece Nozzle Design
- ➔ 12 Point Plenum Design



1 Quart CAT Pack  
Pressure Cup  
(Aluminum)  
**CP-L300C-303R2**



1 Quart CAT Pack  
Pressure Cup  
(PPS)  
**CP-L300C-PPSR2**

**Lynx 300C**  
"Fine Finish"

### Available Outfits

#### 2 Quart Outfits

(Includes 5' Hose Assemblies)



2 Quart  
(Economy)  
**OL300C-130**

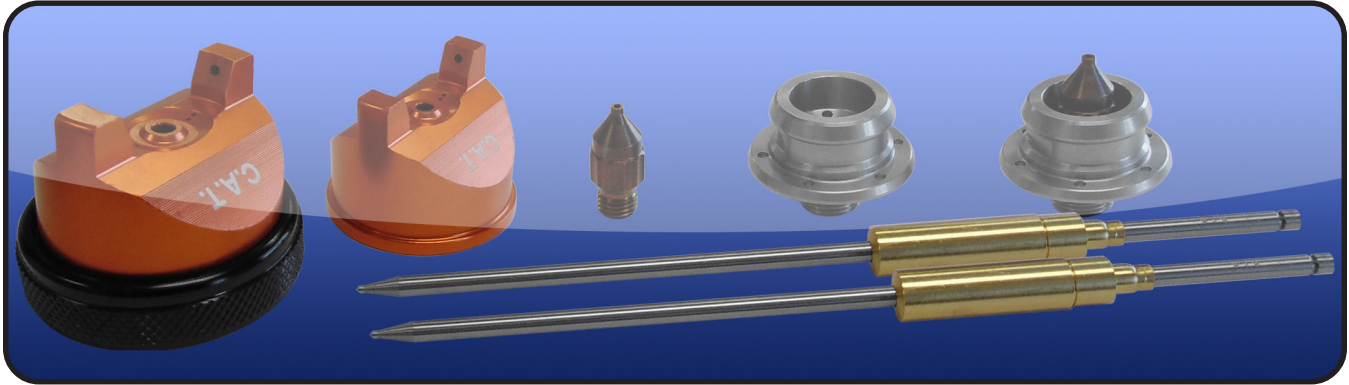


2 Quart  
(Bandit)  
**OL300C-600**

#### Tank Outfits

Tank Outfits Include 25' Hose  
Assemblies and are available in  
2.5 gal, 5 gal, 10 gal, 12.5 gal  
and 15 gal sizes.  
(Includes 25' Hose Assemblies)



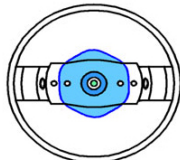
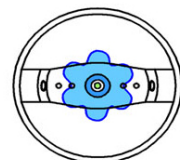






## Nozzle Chart for *Lynx 300C*

| Material                   | Orifice Size | L300C CONVEN.     |
|----------------------------|--------------|-------------------|
| Stains, Dyes               | 0.8          | 55 PSI @ 10.7 CFM |
| Single Stage               | 1.3 - 1.4    | 55 PSI @ 10.7 CFM |
| Base Coat                  | 1.3 - 1.4    | 55 PSI @ 10.7 CFM |
| Clear Coat                 | 1.3 - 1.4    | 55 PSI @ 10.7 CFM |
| High Solid Clears          | 1.4 - 1.6    | 55 PSI @ 10.7 CFM |
| Sealer                     | 1.4 - 1.6    | 55 PSI @ 10.7 CFM |
| Primer, Wash Primer, Epoxy | 1.4 - 1.6    | 55 PSI @ 10.7 CFM |

**Q: What makes our atomization superior?**

**A: Our 12 Point Balanced Plenum**

| <i>Lynx 300C</i>  | Competition  |
|---|--|
|  <p>12 point diffusion makes a more even cone of air as the fluid is atomized</p> |  <p>Without 12 point diffusion, high and low spikes exist as the air atomizes the fluid</p> |
|  <p>The result is more uniform particles</p>                                    |  <p>The result is very small and large particles</p>                                      |
|  <p>A flatter more uniform finish is achieved</p>                               |  <p>This will have a more orange peel finish</p>  |

# Lynx

## Air Caps for *Lynx 300C*

| Air Caps | Pressure / Siphon | Max Inlet Pressure | CFM @ Max Inlet Pressure |
|----------|-------------------|--------------------|--------------------------|
| 23-2010  | P/S               | 45 PSI - 55 PSI    | 9 - 10.7 CFM             |
| 23-2013  | P/S               | 45 PSI - 55 PSI    | 9 - 10.7 CFM             |
| 23-2014  | P/S               | 45 PSI - 55 PSI    | 9 - 10.7 CFM             |
| 23-2016  | P/S               | 45 PSI - 55 PSI    | 9 - 10.7 CFM             |