

Jaguar 300C

300 Series Conventional Fine Finish

The Jaguar 300C is a high quality fine finish spray gun designed for achieving the ultimate in fine finish atomization. The 12 point plenum design provides for a more even and smooth finish.

Jaguar 300C

Features

- ⇒ Forged Aluminum Body
- ⇒ Stainless Steel Fluid Passages
- ⇒ Patented 2 Piece Nozzle
- ⇒ 12 Point Plenum Design
- ⇒ Fine Finish Atomization



Jaguar 300C

"Fine Finish Series"

Gravity Cups



700 mL
(Plastic)
51-400



700 mL
(Aluminum)
51-401



1000 mL
(Aluminum)
51-403

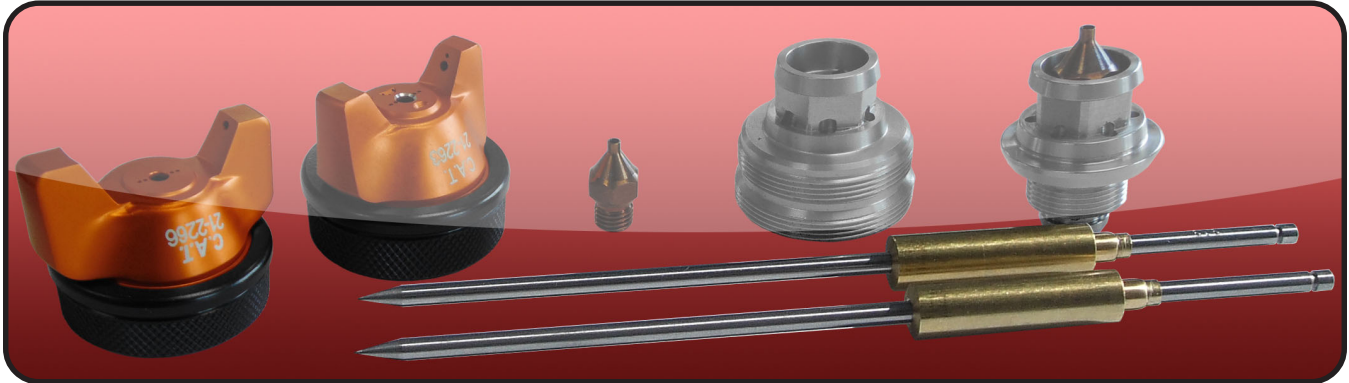
CAT Packs



CP-J300C



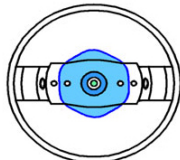
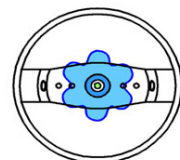




CP-J300C-PPS



<i>Nozzle Chart for Jaguar 300C</i>		
Material	Orifice Size	J300C CONVEN.
Stains, Dyes	0.8 - 1.0	55 PSI @ 10.7 CFM
Single Stage	1.3 - 1.4	55 PSI @ 10.7 CFM
Base Coat	1.3 - 1.4	55 PSI @ 10.7 CFM
Clear Coat	1.3 - 1.4	55 PSI @ 10.7 CFM
High Solid Clears	1.4 - 1.6	55 PSI @ 10.7 CFM
Sealer	1.4 - 1.6	55 PSI @ 10.7 CFM
Primer, Wash Primer, Epoxy	1.4 - 1.6	55 PSI @ 10.7 CFM

Q: What makes our atomization superior?

A: Our 12 Point Balanced Plenum

<i>Jaguar 300C</i>	<i>Competition</i>
 <p>12 point diffusion makes a more even cone of air as the fluid is atomized</p>	 <p>Without 12 point diffusion, high and low spikes exist as the air atomizes the fluid</p>
 <p>The result is more uniform particles</p>	 <p>The result is very small and large particles</p>
 <p>A flatter more uniform finish is achieved</p>	 <p>This will have a more orange peel finish</p>

Jaguar

<i>Air Caps for Jaguar 300C</i>			
Air Caps	Pressure / Siphon	Max Inlet Pressure	CFM @ Max Inlet Pressure
23-2010	P/S	45 PSI - 55 PSI	9 - 10.7 CFM
23-2013	P/S	45 PSI - 55 PSI	9 - 10.7 CFM
23-2014	P/S	45 PSI - 55 PSI	9 - 10.7 CFM
23-2016	P/S	45 PSI - 55 PSI	9 - 10.7 CFM