

# FX30 & FX35 FLUID PUMP ASSEMBLIES



**Carbon Steel Models:**  
FX30PU-CAK (PTFE/UHMW)  
FX35PU-CAK (PTFE/UHMW)

**Stainless Steel Models:**  
FX35PU-SAK (PTFE/UHMW)  
FX35PU-SAH (PTFE/UHMW)

## SPECIFICATIONS

	FX30	FX35
Theoretical Output @ 60 cycles/min:	3.0 gpm [11.4 l/m]	3.5 gpm [13.2 l/m]
Displacement per cycle:	6.4 oz [190 CC]	7.4 oz [220 CC]
Maximum fluid pressure:	7250 psi [500 bar]	
Maximum operating temperature:	160° F [71° C]	
Stroke length:	5 in [127 mm]	
Inlet size:	1 1/4" NPT (f) [Hex] or 1 1/2" NPT (m) [Knock-off]	
Outlet size:	3/4" NPT (f)	
Weight:	44.7 lbs [20.3 kg]	
Wetted parts (Carbon Steel models):	Nickel plated Carbon Steel, Stainless Steel, Ceramic coated Stainless Steel, PTFE, UHMWPE	
Wetted parts (Stainless Steel models):	Stainless Steel, Ceramic coated Stainless Steel, PTFE, UHMWPE	

In this part sheet, the words **WARNING**, **CAUTION** and **NOTE** are used to emphasize important safety information as follows:

**⚠ WARNING**  
 Hazards or unsafe practices which could result in severe personal injury, death or substantial property damage.

**⚠ CAUTION**  
 Hazards or unsafe practices which could result in minor personal injury, product or property damage.

**NOTE**  
 Important installation, operation or maintenance information.

**⚠ WARNING**

**Read the following warnings before using this equipment.**



**READ THE MANUAL**

Before operating finishing equipment, read and understand all safety, operation and maintenance information provided in the operation manual.



**WEAR SAFETY GLASSES**

Failure to wear safety glasses with side shields could result in serious eye injury or blindness.



**DE-ENERGIZE, DEPRESSURIZE, DISCONNECT AND LOCK OUT ALL POWER SOURCES DURING MAINTENANCE**

Failure to De-energize, disconnect and lock out all power supplies before performing equipment maintenance could cause serious injury or death.



**OPERATOR TRAINING**

All personnel must be trained before operating finishing equipment.



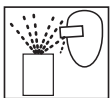
**EQUIPMENT MISUSE HAZARD**

Equipment misuse can cause the equipment to rupture, malfunction, or start unexpectedly and result in serious injury.



**KEEP EQUIPMENT GUARDS IN PLACE**

Do not operate the equipment if the safety devices have been removed.



**PROJECTILE HAZARD**

You may be injured by venting liquids or gases that are released under pressure, or flying debris.



**PINCH POINT HAZARD**

Moving parts can crush and cut. Pinch points are basically any areas where there are moving parts.



**AUTOMATIC EQUIPMENT**

Automatic equipment may start suddenly without warning.



**INSPECT THE EQUIPMENT DAILY**

Inspect the equipment for worn or broken parts on a daily basis. Do not operate the equipment if you are uncertain about its condition.



**NEVER MODIFY THE EQUIPMENT**

Do not modify the equipment unless the manufacturer provides written approval.



**KNOW WHERE AND HOW TO SHUT OFF THE EQUIPMENT IN CASE OF AN EMERGENCY**



**PRESSURE RELIEF PROCEDURE**

Always follow the pressure relief procedure in the equipment instruction manual.



**NOISE HAZARD**

You may be injured by loud noise. Hearing protection may be required when using this equipment.



**HIGH PRESSURE CONSIDERATION**

High pressure can cause serious injury. Relieve all pressure before servicing. Spray from the spray gun, hose leaks, or ruptured components can inject fluid into your body and cause extremely serious injury.



**STATIC CHARGE**

Fluid may develop a static charge that must be dissipated through proper grounding of the equipment, objects to be sprayed and all other electrically conductive objects in the dispensing area. Improper grounding or sparks can cause a hazardous condition and result in fire, explosion or electric shock and other serious injury.

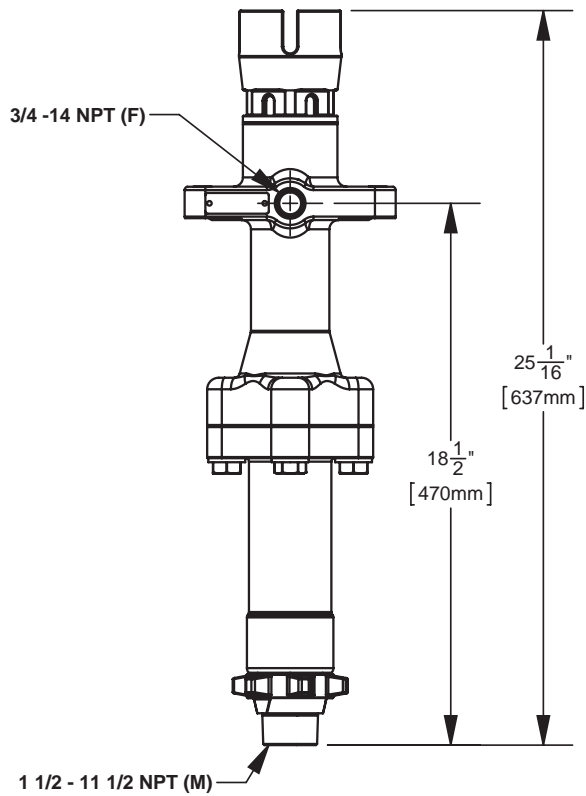
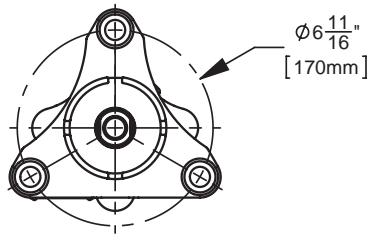


**PROP 65 WARNING**

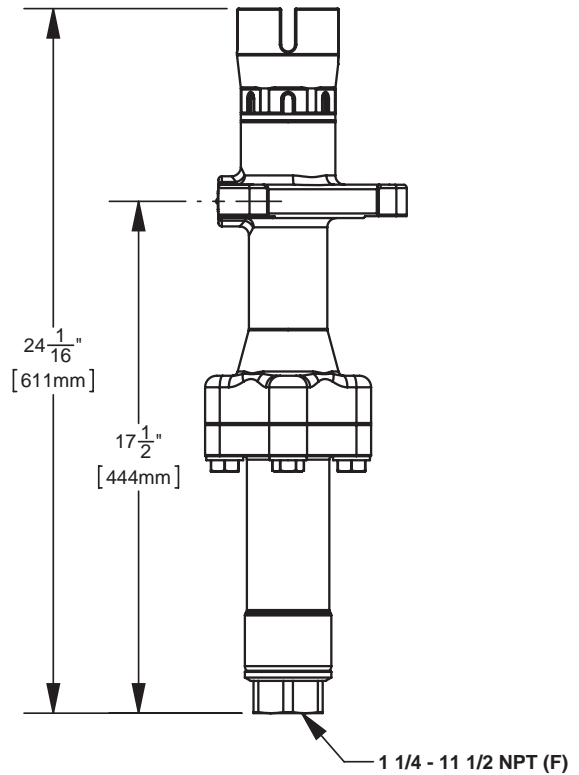
WARNING: This product contains chemicals known to the State of California to cause cancer and birth defects or other reproductive harm.

**IT IS THE RESPONSIBILITY OF THE EMPLOYER TO PROVIDE THIS INFORMATION TO THE OPERATOR OF THE EQUIPMENT. FOR FURTHER SAFETY INFORMATION REGARDING THIS EQUIPMENT, SEE THE GENERAL EQUIPMENT SAFETY BOOKLET (77-5300).**

**FX30 & FX35 FLUID PUMP ASSEMBLIES**



**KNOCK-OFF INLET OPTION**

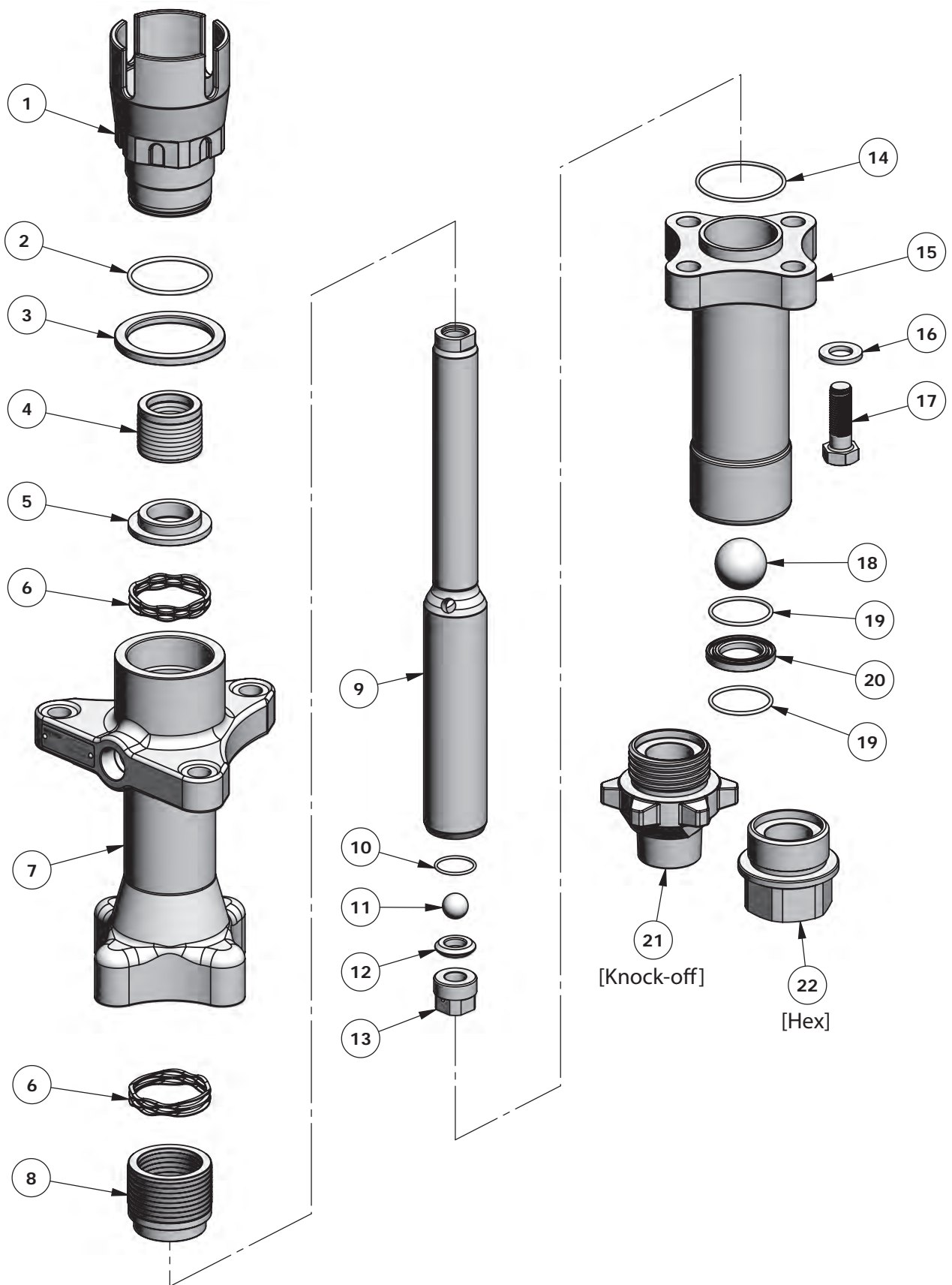


**HEX INLET OPTION**

**TROUBLESHOOTING**

SYMPTOM	POSSIBLE CAUSE	REMEDY
Material in solvent cup	Worn or dirty upper packings.	Replace or clean upper packings as necessary.
Pump does not stop on the down stroke	Worn or dirty lower ball check.	Replace or clean the parts as necessary.
Pump does not stop on the up stroke	Worn or dirty upper ball check.	Replace or clean the parts as necessary.
	Worn or dirty lower packings.	
Pump runs erratically	Blocked material siphon kit.	Replace or clean the siphon kit.
	Blocked inlet filter or strainer	Replace or clean inlet filter or strainer.
	Low material level.	Replace or refill material container.

FX30 & FX35 FLUID PUMP ASSEMBLIES



### FX30 & FX35 FLUID PUMP ASSEMBLIES

ITEM NO.	PART NO.	DESCRIPTION	QTY.
1	193295	PACKING NUT	1
2	162773 ▲	O-RING, Ø52MM	1
3	193298	PACKING SPACER	1
4	193313 ■	FX35 UPPER PACKING ASSEMBLY (PTFE/UHMW)	1
	193508 ■	FX30 UPPER PACKING ASSEMBLY (PTFE/UHMW)	1
5	193299	PACKING LOADER	1
6	41-28038	PACKING SPRING	2
7	193326	UPPER HOUSING (CARBON STEEL)	1
	193285	UPPER HOUSING (STAINLESS STEEL)	1
8	193314 ■	FX35 LOWER PACKING ASSEMBLY (PTFE/UHMW)	1
	193504 ■	FX30 LOWER PACKING ASSEMBLY (PTFE/UHMW)	1
9	193287	FX35 PUMP ROD	1
	193500	FX30 PUMP ROD	1
10	162770 ▲	O-RING, Ø27MM	1
11	171790 ▲	Ø3/4" BALL	1
12	193288	Ø3/4" BALL SEAT	1
13	193289	SEAT RETAINER	1
14	162772 ■	O-RING, Ø62MM	1
15	193327	LOWER HOUSING (CARBON STEEL)	1
	193286	LOWER HOUSING (STAINLESS STEEL)	1
16	165097 •	WASHER	4
17	165369 •	HEX HEAD CAP SCREW	4
18	191791 ▲	Ø1-1/2" BALL	1
19	162771 ▲	O-RING, Ø45MM	2
20	193290	Ø1-1/2" BALL SEAT ASSEMBLY	1
21	193334	FLUID INLET (KNOCK-OFF)	1
22	193468	FLUID INLET (HEX)	1

- Parts are included in the following packing kits:  
41-28287 for model: FX35PU  
41-28289 for model: FX30PU
- Parts are included within the hardware kit: 41-28274
- ▲ Parts are available as multi-packs.

### NOTE

See page 7 for additional kits and multi-packs.

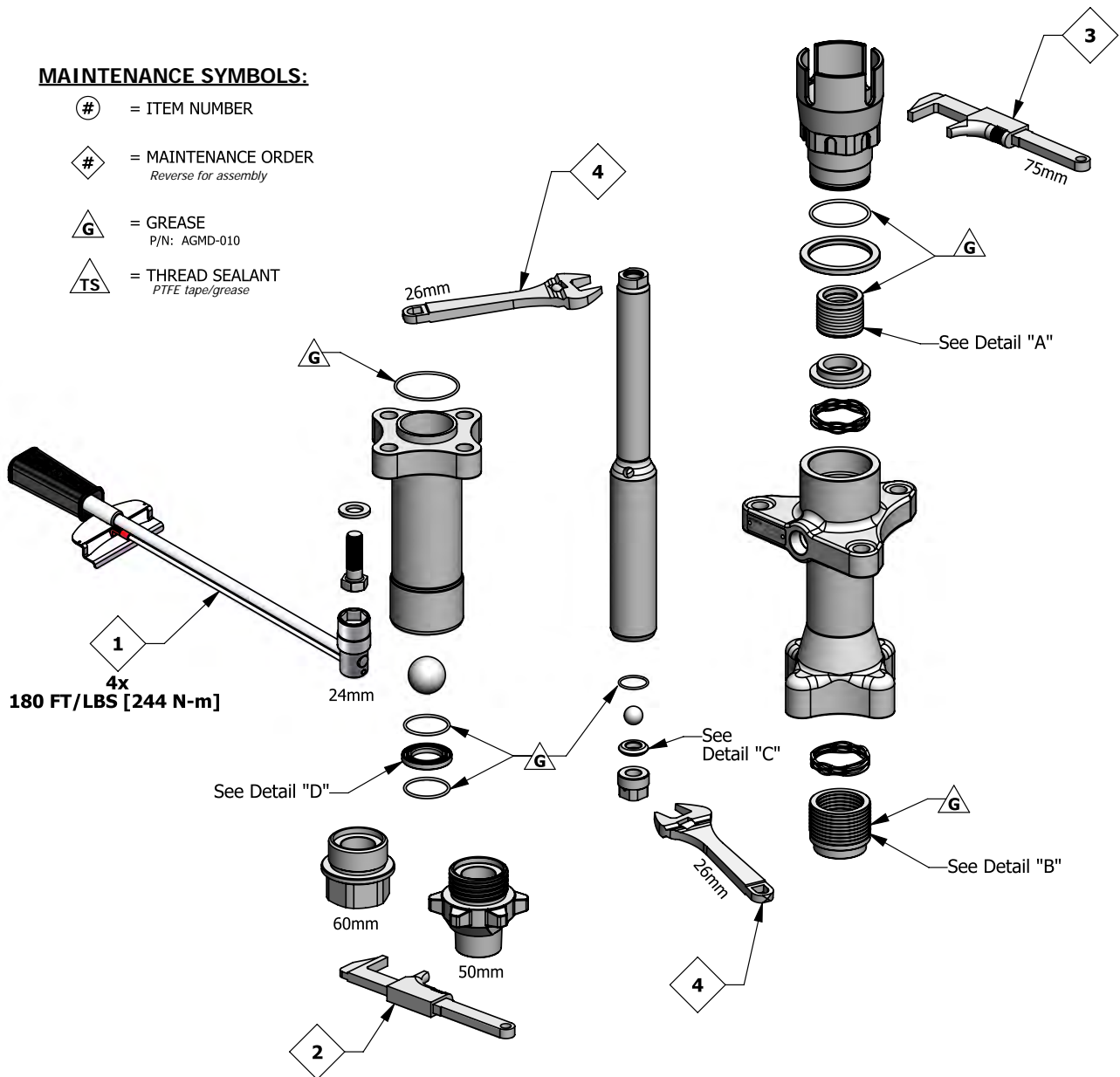
Recommended grease: AGMD-010

Recommend packing lubricants:  
0114-009433 for Solvent based materials  
0114-014871 for Water based materials

## FX30 & FX35 FLUID PUMP ASSEMBLIES

**MAINTENANCE SYMBOLS:**

- # = ITEM NUMBER
- # = MAINTENANCE ORDER  
*Reverse for assembly*
- G = GREASE  
P/N: AGMD-010
- TS = THREAD SEALANT  
*PTFE tape/grease*



**DETAIL "A"  
UPPER PACKING ORIENTATIONS**



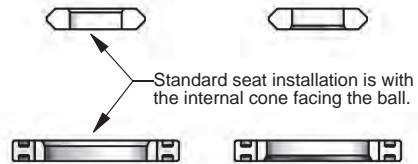
PTFE / UHMW



**DETAIL "B"  
LOWER PACKING ORIENTATIONS**

Apply a light coating of grease onto the packing's, before inserting into the pump.

**DETAIL "C"  
UPPER BALL SEAT ORIENTATION  
*(seat is reversible)***



**DETAIL "D"  
LOWER BALL SEAT ORIENTATION  
*(seat is reversible)***

## FX35 AND FX30 REBUILD & SEAL & KITS

ITEM NO.	PART NO.	DESCRIPTION	FX35 REBUILD KIT	FX35 SEAL KIT	FX30 REBUILD KIT	FX30 SEAL KIT
			250661	250659	250665	250663
			PTFE/ UHMW	PTFE/ UHMW	PTFE/ UHMW	PTFE/ UHMW
2	162773	O-RING, Ø52MM	1	1	1	1
4	193313	FX35 UPPER PACKING ASSEMBLY (PTFE/UHMW)	1	1		
	193508	FX30 UPPER PACKING ASSEMBLY (PTFE/UHMW)			1	1
8	193314	FX35 LOWER PACKING ASSEMBLY (PTFE/UHMW)	1	1		
	193504	FX30 LOWER PACKING ASSEMBLY (PTFE/UHMW)			1	1
10	162770	O-RING, Ø27MM	1	1	1	1
11	171790	Ø3/4" BALL	1		1	
12	193288	Ø3/4" BALL SEAT	1		1	
14	162772	O-RING, Ø62MM	1	1	1	1
18	191791	Ø1-1/2" BALL	1		1	
19	162771	O-RING, Ø45MM	2	2	2	2
20	193290	Ø1-1/2" BALL SEAT ASSEMBLY	1		1	

## BALL & SEAT KITS

ITEM NO.	PART NO.	DESCRIPTION	250692	250693
			UPPER	LOWER
11	171790	Ø3/4" BALL	1	
12	193288	Ø3/4" BALL SEAT	1	
18	191791	Ø1-1/2" BALL		1
20	193290	Ø1-1/2" BALL SEAT ASSEMBLY		1

## MULTI-PACK KITS

ITEM NO.	PART NO.	DESCRIPTION	PACK QTY.
2	162773-K4	O-RING, Ø52MM	4
4	193304-K8	FX35 UPPER PACKING, PTFE	8
	192937-K8	FX35 UPPER PACKING, UHMWPE	8
	193517-K8	FX30 UPPER PACKING, PTFE	8
	193518-K8	FX30 UPPER PACKING, UHMWPE	8
8	193306-K8	FX35 LOWER PACKING, PTFE	8
	192929-K8	FX35 LOWER PACKING, UHMWPE	8
	193512-K8	FX30 LOWER PACKING, PTFE	8
	193513-K8	FX30 LOWER PACKING, UHMWPE	8
10	162770-K4	O-RING, Ø27MM	4
11	171790-K3	Ø3/4" BALL	3
14	162772-K5	O-RING, Ø62MM	5
18	191791-K3	Ø1-1/2" BALL	3
19	162771-K8	O-RING, Ø45MM	8

## WARRANTY POLICY

Binks products are covered by Carlisle Fluid Technologies one year materials and workmanship limited warranty. The use of any parts or accessories, from a source other than Carlisle Fluid Technologies, will void all warranties. For specific warranty information please contact the closest Carlisle Fluid Technologies location listed below.

Carlisle Fluid Technologies reserves the right to modify equipment specifications without prior notice. DeVilbiss®, Ransburg®, ms®, BGK®, and Binks® are registered trademarks of Carlisle Fluid Technologies, Inc.

©2018 Carlisle Fluid Technologies, Inc.  
All rights reserved.

Binks is part of Carlisle Fluid Technologies, a global leader in innovative finishing technologies. For technical assistance or to locate an authorized distributor, contact one of our international sales and customer support locations.

### USA/Canada

info@carlisleleft.com  
Tel: 1-888-992-4657  
Fax: 1-888-246-5732

### China

mkt@carlisleleft.com.cn  
Tel: +8621-3373 0108  
Fax: +8621-3373 0308

### Germany

info@carlisleleft.eu  
Tel: +49 (0) 6074 403 1  
Fax: +49 (0) 6074 403 281

### United Kingdom

info@carlisleleft.eu  
Tel: +44 (0)1202 571 111  
Fax: +44 (0)1202 573 488

### Mexico

ventas@carlisleleft.com.mx  
Tel: +52 55 5321 2300  
Fax: +52 55 5310 4790

### Australia

sales@carlisleleft.com.au  
Tel: +61 (0) 2 8525 7555  
Fax: +61 (0) 2 8525 7575

### Japan

overseas-sales@carlisleleft.co.jp  
Tel: +81 45 785 6421  
Fax: +81 45 785 6517



DISTRIBUTED BY COATING EQUIPMENT TECHNOLOGY, INC  
store.cetinc.com • (586) 210-0555

For the latest information about our products, visit [www.carlisleleft.com](http://www.carlisleleft.com).