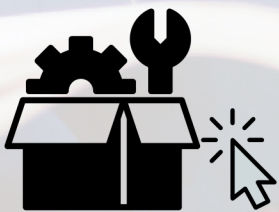


# CET

Coating Equipment Technology, Inc  
Quality Spray Equipment. World Class Service.

## C.A. Technologies

### CA Tech Panther P100G Spray Gun



### CLICK-N-PICK SPARE PARTS CUTSHEET

Easily find spare parts without digging through the full manual.

[Click on part numbers to order.](#)

**BINKS**

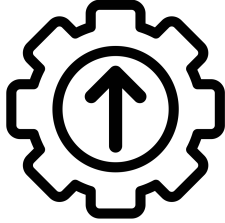


**C.A. Technologies**

**DEVILBISS**

**SCHULZ**

ENHANCED \*INTERACTIVE\* MANUAL



BLUE TEXT = CLICK TO ORDER



**Recommend Air Caps for Adhesives:**

- 21-2263 (1.3 - 1.8 setup)
- 21-2266-3T (1.3 - 1.8 setup)
- 21-2167 (2.2 setup)
- 21-2168 (2.8 setup)

**CONVENTIONAL AIR CAP AND FLUID NOZZLE CHART**

MODEL NO.	PRESS / SIPHON	AIR CAP	FLUID TIP RANGE	FAN CONTROL	SCFM	AIR CAP RING	AVAILABLE FLUID NOZZLES	NEEDLES / marking on needle
P100G	Siphon	<a href="#">21-2166</a>	0.6 - 1.8	60-1500	5	included	<b>17-4PH STAINLESS</b>	
		<a href="#">21-2266</a>	0.6 - 1.8		12		<b>300 STAINLESS</b>	
		<a href="#">21-2266T</a>	0.6 - 1.8		12		<a href="#">31-0606</a> 0.6mm (.022")	<a href="#">40-1107</a> (107)
		<a href="#">21-2366</a>	0.6 - 1.8		12		<a href="#">31-0607</a> 0.7mm (.028")	
		<a href="#">21-2466</a>	0.6 - 1.8		15		<a href="#">31-0610</a> 1.0mm (.040")	<a href="#">40-1110</a> (110)
		<a href="#">21-2467</a>	2.2		15		<a href="#">31-0612</a> 1.2mm (.046")	
		<a href="#">21-2268</a>	2.8		15		<a href="#">31-0613</a> 1.3mm (.052")	
	Pressure	<a href="#">21-2163</a>	0.6 - 1.8		8		<a href="#">31-0615</a> 1.5mm (.059")	<a href="#">40-1115</a> (115)
		<a href="#">21-2263</a>	0.6 - 1.8		14		<a href="#">31-0618</a> 1.8mm (.070")	
		<a href="#">21-2266-3</a>	0.6 - 1.8		16.2		<a href="#">31-0622</a> 2.2mm (.086")	<a href="#">40-1122</a> (122)
		<a href="#">21-2266-3T</a>	0.6 - 1.8		16.2		<a href="#">31-0628</a> 2.8mm (.110")	
		<a href="#">21-2167</a>	2.2		14.5		<b>CARBIDE</b>	
		<a href="#">21-2267</a>	2.2		15		<a href="#">31-0618V</a> 1.8mm (.070")	<a href="#">40-6201</a>
		<a href="#">21-2168</a>	2.8		14		<a href="#">31-0622V</a> 2.2mm (.086")	<a href="#">40-6201</a>
	<a href="#">21-2766B</a>	1.0 - 1.8	8		<a href="#">31-0628V</a> 2.8mm (.110")		<a href="#">40-6201</a>	
	Internal Mix	<a href="#">21-200**</a>	1.5 - 1.8		5.2			
		<a href="#">21-2201**</a>	2.2		5.2			

Actual fluid nozzle and air cap combinations are determined by application (see application chart page 4)

\*Gun inlet pressures may vary as required by application

\*\*200 Air cap requires P/N 21-1583 base & 21-1584 ring



DISTRIBUTED BY COATING EQUIPMENT TECHNOLOGY, INC

PHONE: 586-210-0555

WEB: www.cetinc.com

# Operation and Maintenance Instructions for *P100G* Spray Guns

## Operation

1. Connect air supply hose at handle of gun.
2. Connect a pressurized fluid supply or paint siphon cup to the gun fluid inlet.
3. Fluid flow can be controlled using the fluid control knob, this restricts flow by limiting needle travel. It is best to control fluid flow by proper selection of fluid orifice size and use the fluid control knob to “fine tune flow rate”.
4. Fan width can be adjusted using the fan control knob. Turning the knob clockwise narrows the fan.

## Maintenance

IMPORTANT! Routine cleaning and maintenance is essential to insure proper gun operation.

Several states prohibit spraying solvent into the atmosphere and require the use of covered gun cleaner.

1. If a gun cleaner is being used, connect and clean the gun in the gun cleaner according to the manufactures instructions.
2. If a gun cleaner is not being used:  
Remove air cap and clean separately using clean solvent.  
For pressure setups, connect a pressurized solvent supply to the fluid inlet, trigger the gun allowing solvent to flow thru the gun until clean.  
For siphon setups, first clean the siphon cup thoroughly then spray clean solvent thru the gun until clean.

**NOTE: Gun head disassembly is not recommended for normal cleaning and maintenance.**

### **Gun head disassembly and reassembly instructions:**

Have repair kit # 10-110 available before gun disassembly.

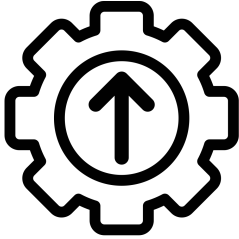
#### **Gun head disassembly**

To remove the nozzle carrier (4) and air cap adapter (6):

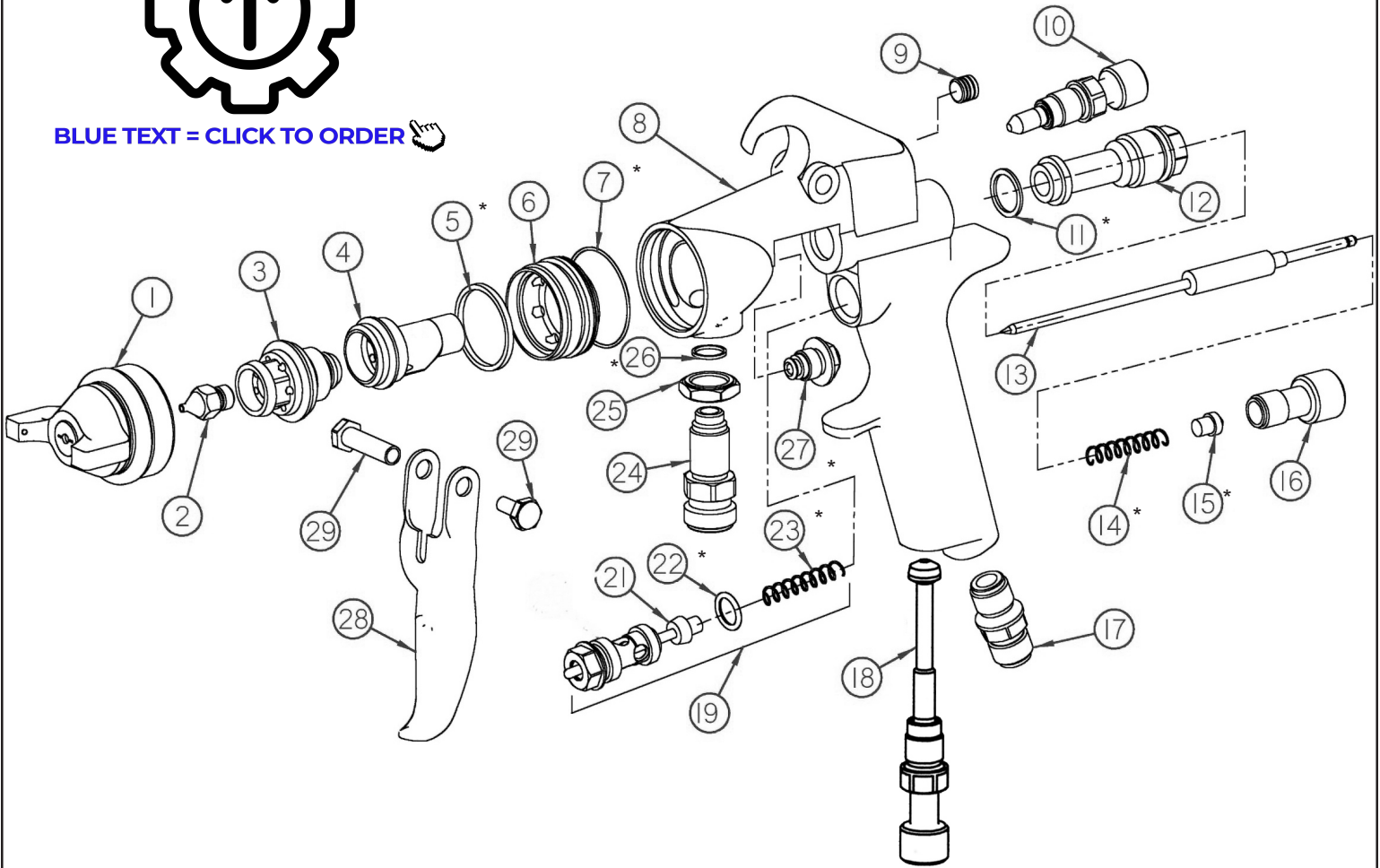
1. Remove the air cap (1), fluid nozzle tip (2), fluid nozzle body (3), and needle (13).
2. Remove the needle seal cartridge (27).
3. Loosen the locknut (25) and remove fluid inlet (24) using a 5/8” open-end wrench.
4. The nozzle carrier (4) and air cap adapter (6) will now slide forward from the gun body (8).

#### **Gun head reassembly**

1. Install a new o-ring (7) on the air cap adapter (6).
2. Install gasket (5) into the air cap adapter (6).
3. Install the thread locknut (25) onto the fluid inlet (24) as far as possible.
4. Install a new fluid inlet seal (26) into the recess area on the nozzle carrier (4) inlet port.
5. Slide the nozzle carrier (4) into air cap adapter (6) and insert into the gun body (8) as far as possible. Be sure the nozzle carrier (4) extends into the hole at the back of the gun head. Install the needle seal (27) but do not tighten.
6. Rotate the nozzle carrier (4) until the fluid inlet port in the nozzle carrier (4) is aligned with the threaded hole in the body. While in this position, insert the fluid inlet (24) and tighten firmly.
7. Tighten the needle seal (27) to approx. 12 ft.-lb. torque.
8. Tighten the fluid inlet (24) to approx. 25 ft.-lb. torque.
9. Tighten the locknut (25) to approx. 33 ft.-lb. torque.



BLUE TEXT = CLICK TO ORDER 



**CLICK PART NUMBERS TO ORDER ONLINE**

ITEM NO.	PART NO.	DESCRIPTION	ITEM NO.	PART NO.	DESCRIPTION
1	See Air Cap Chart	Air Cap**	15	60-209	Spring Seat*
2	See Air Cap Chart	Fluid Tip**	16	<a href="#">60-202</a>	Fluid Control Knob
3	<a href="#">31-2201</a>	Fluid Nozzle Body	17	<a href="#">60-104</a>	Air Inlet Fitting
4	<a href="#">60-L11C</a>	Nozzle Body Carrier	18	<a href="#">60-1510</a>	Inlet Air Control
5	<a href="#">61-1005</a>	Seal*	19	<a href="#">60-1520</a>	Air Valve Assembly
6	<a href="#">60-12C</a>	Air Cap Adapter	21	<a href="#">60-302</a>	Air Valve Poppet
7	<a href="#">60-131</a>	O-Ring*	22	<a href="#">60-125</a>	Seal*
8	60-1125	Panther Gun Body Conventional	23	<a href="#">61-1003</a>	Air Valve Spring*
9	<a href="#">98-0109</a>	Allen Plug	24	<a href="#">60-126</a>	Fluid Inlet
10	See Air Cap Chart	Fan Control Assembly**	25	<a href="#">60-128</a>	Locknut
11	<a href="#">60-119</a>	Seal*	26	<a href="#">60-124</a>	Seal*
12	<a href="#">60-201</a>	Rear Bushing	27	<a href="#">60-1400</a>	Needle Seal*
13	See Air Cap Chart	Fluid Needle**	28	<a href="#">60-2101</a>	Trigger
14	<a href="#">60-206</a>	Needle Return Spring (HD)*	29	<a href="#">60-1033</a>	Trigger Pivot Set

\*\*See air cap selection chart on page 1

\*Indicates part included in repair kit # 10-110

# FLUID NOZZLE / AIR CAP SELECTION CHARTS

## PANTHER Series 100G - Pressure / Siphon Feed Guns

### P100G CONVENTIONAL SPRAY GUN

MATERIAL TYPE	FLUID ORIFICE x AIR CAP	MAXIMUM PATTERN WIDTH	PRESS. / SIPHON
<b>Very Thin</b> less than 16 sec. Zahn #2 inks , dyes, solvents, stains	0.6, 0.7 mm x 2163	8	P
	0.6, 0.7 mm x 2166	9	S
	0.6, 0.7 mm x 2266T	12	S
<b>Thin</b> 16 to 20 sec. Zahn #2 lacquers, enamels, primers, sealers	0.6, 0.7, 1.0 mm x 2163	8	P
	0.6, 0.7, 1.0 mm x 2366	14	S
	0.6, 0.7, 1.0 mm x 2466	13	S
<b>Medium</b> 21 to 30 sec. Zahn #2 automotive base coat enamels, primers epoxies, urethanes automotive clear coat	1.2, 1.3, 1.5, 1.8 mm x 2263	14	P
	1.2, 1.3, 1.5, 1.8 mm x 2266T	10	S
	1.2, 1.3, 1.5, 1.8 mm x 2266-3T	15	S
	1.2, 1.3, 1.5, 1.8 mm x 2466	13	S
<b>Heavy</b> over 30 sec. Zahn #2 heavy body primers high solid enamels high solid automotive coatings adhesives	1.5, 1.8mm x 2466	13	S
	2.2 mm x 2167	12	P
	2.2 mm x 2267	15	P
	2.8 mm x 2168	12	P